

Pattern Number: **5767**

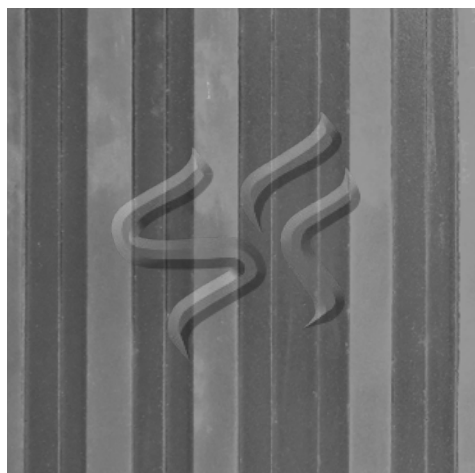
Texas Shuffle

1/4" (6mm) max. relief with
1/8" (3mm) steps

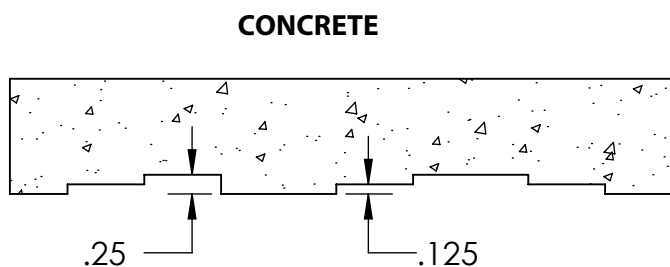


Spec Formliners, Inc.

Impressive on Concrete



Note: May require backing



Visit www.specformliners.com for application guides and technical information

ThermoSpec™ SINGLE OR MULTI-USE PLASTIC

Property	HIPS	ABS
Tensile D638	3700	5300
IFlexural D7905	-	9300
Hardness D786	-	105
Material Weights - lbs/ft²		
0.070 MIL	0.110 MIL	0.150 MIL
0.393	0.621	0.843
Thicknesses Available		
0.070, 0.090, 0.110, 0.145, 0.155, 0.180		

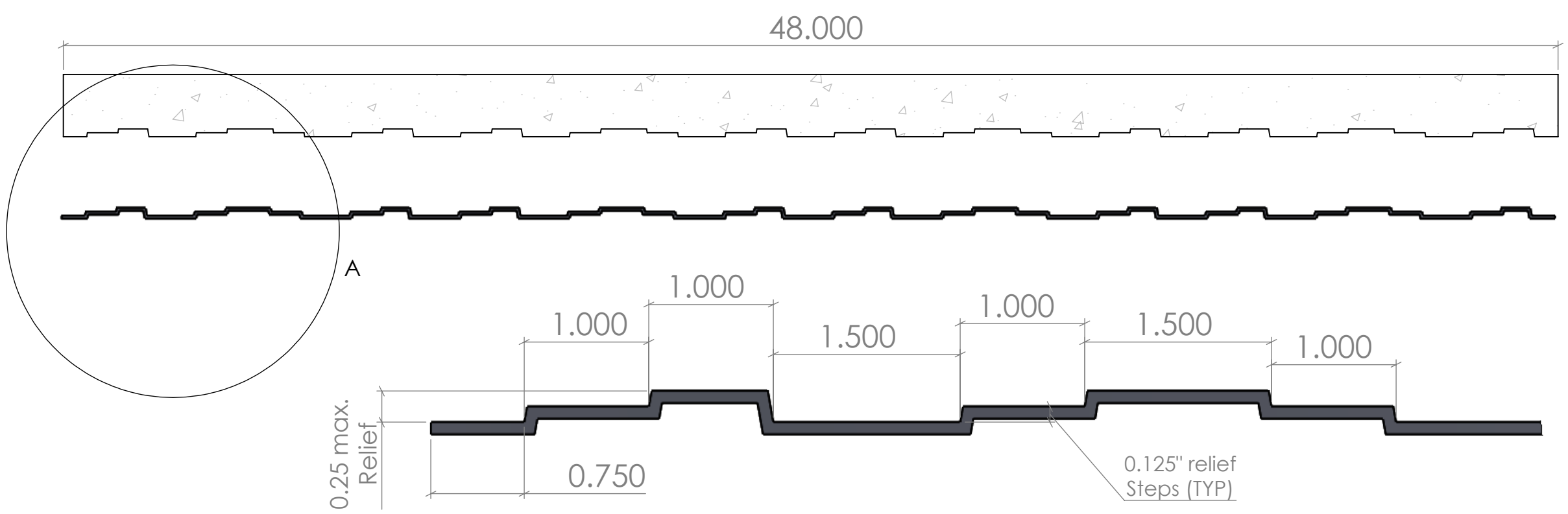
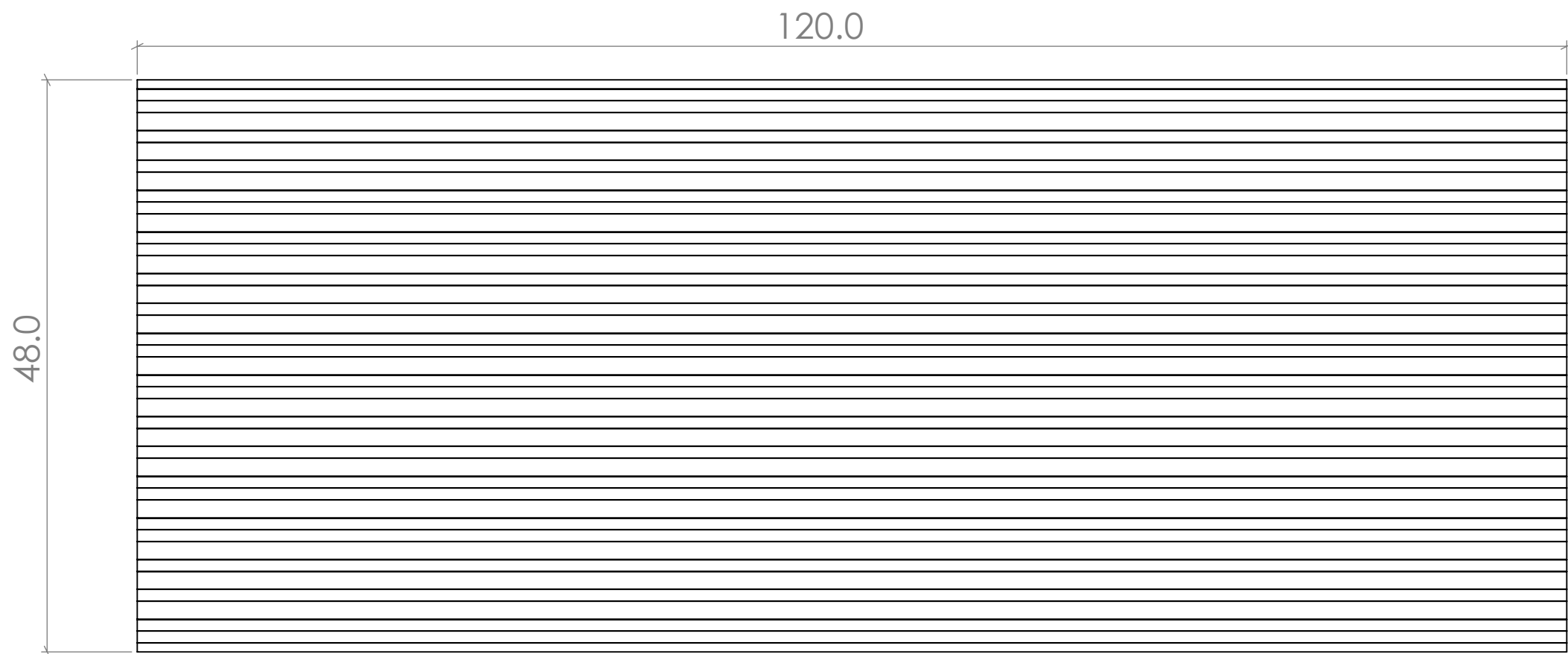
ElastoSpec Lite™ Semi-Elastomeric MULTI-USE MATERIAL

Property	ASTM	Rating
Shore A/D	D2240	40D/90A
Tensile	D412	1900 psi
Elongation	D412	300%
Tear Strength	D2370	23 MPa
Material Weights - lbs/ft²		
Varies by Pattern		
Maximum Thickness		
1/4" + Relief		

ElastoSpec™ 100% Solid Urethane BONDED TO 3/4" PLYWOOD

Property	ASTM	Rating
Shore A	D2240	55-65
Tensile	D412	1400 psi
Elongation	D638	600%
Tear Strength	D624	200 pli
Material Weights - lbs/ft²		
Varies by Pattern		
Maximum Thickness		
1-1/8" + Relief		

**Call for ThermoSpec™ Standard Panel Sizes on this pattern.
ElastoSpec™ Customized Panel Sizes and Art Panels Available.**



CONCRETE

FORMLINER

DETAIL A
SCALE 1 : 1
FORMLINER

Spec Formliners, Inc.
1038 E. 4th St, Santa Ana, CA 92701
844-429-9500
www.SpecFormliners.com



DRAWN BY: Drew D. 7/16/2010
PROPRIETARY AND CONFIDENTIAL
THE INFORMATION CONTAINED IN THIS DRAWING IS THE SOLE PROPERTY OF SPEC FORMLINERS, INC. ANY REPRODUCTION IN PART OR AS A WHOLE WITHOUT THE WRITTEN PERMISSION OF SPEC FORMLINERS, INC. IS PROHIBITED.

SHEET SIZE
11"x17"
DO NOT SCALE
SHEET 1 OF 1

Texas Shuffle
Smooth Flute - Varying Depths
1/4" max. Relief
TexasShuffleShopDrawing

NOTES:
Backing may be required

APPROVAL SIGNATURE:

Please provide a signature in this box to indicate that this drawing has been approved and that Spec Formliners, Inc. may begin production.