

**Spec Formliners, Inc.**

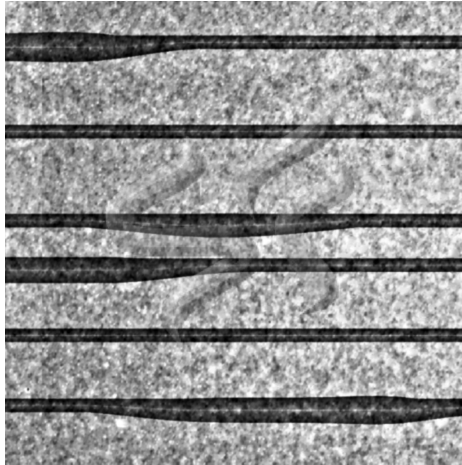
Impressive on Concrete

Pattern Number: **1850**

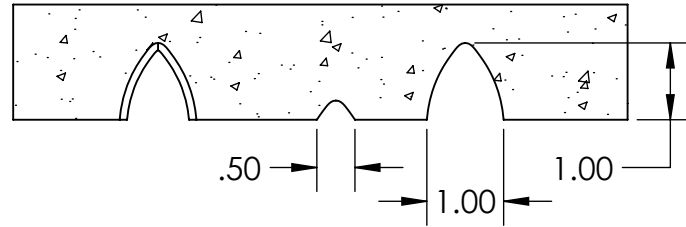
**Random Round Reveals**

0.5" - 1" (12mm - 25mm) depth

**Note:**  
Panels available in 4'x12'



**CONCRETE**



Visit [www.specformliners.com](http://www.specformliners.com) for application guides and technical information

**ThermoSpec™**  
SINGLE OR MULTI-USE PLASTIC

Property	HIPS	ABS
Tensile D638	3700	5300
IFlexural D7905	-	9300
Hardness D786	-	105
<b>Material Weights - lbs/ft<sup>2</sup></b>		
0.070 MIL	0.110 MIL	0.150 MIL
0.393	0.621	0.843
<b>Thicknesses Available</b>		
0.070, 0.090, 0.110, 0.145, 0.155, 0.180		

**ElastoSpec Lite™** Semi-Elastomeric  
MULTI-USE MATERIAL

Property	ASTM	Rating
Shore A/D	D2240	40D/90A
Tensile	D412	1900 psi
Elongation	D412	300%
Tear Strength	D2370	23 MPa
<b>Material Weights - lbs/ft<sup>2</sup></b>		
Varies by Pattern		
<b>Maximum Thickness</b>		
1/4" + Relief		

**ElastoSpec™** 100% Solid Urethane  
BONDED TO 3/4" PLYWOOD

Property	ASTM	Rating
Shore A	D2240	55-65
Tensile	D412	1400 psi
Elongation	D638	600%
Tear Strength	D624	200 pli
<b>Material Weights - lbs/ft<sup>2</sup></b>		
Varies by Pattern		
<b>Maximum Thickness</b>		
1-1/8" + Relief		

Call for ThermoSpec™ Standard Panel Sizes on this pattern. Custom Sizes and Art Panels available  
ElastoSpec™ Customized Panel Sizes and Art Panels

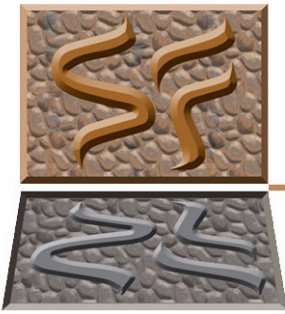
**1850**

Pattern Number:

# Random Round Reveals

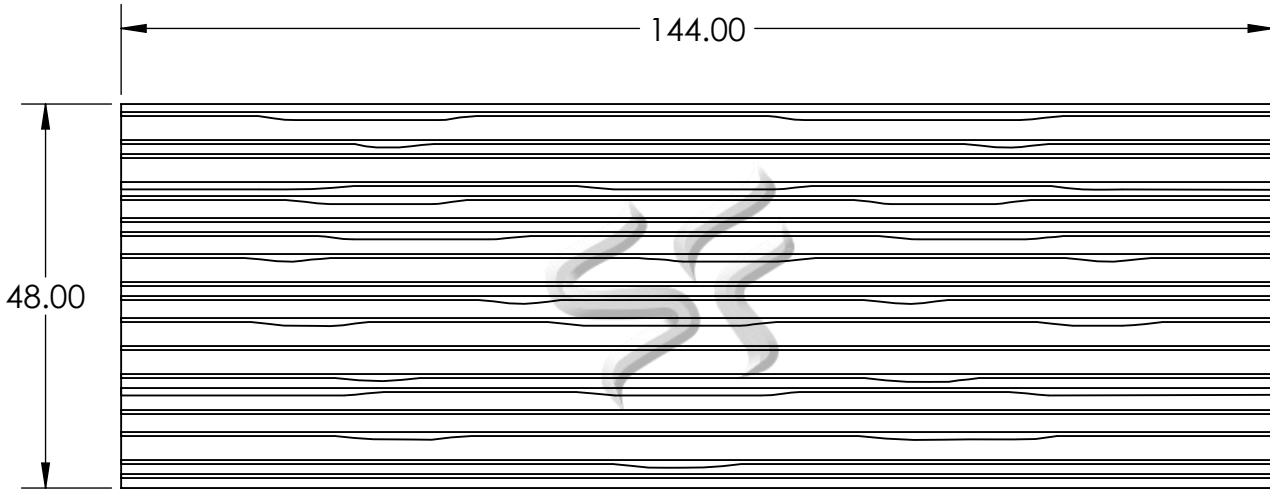
0.5" - 1" (12mm - 25mm) depth

**Note:**  
Panels available in 4'x12'

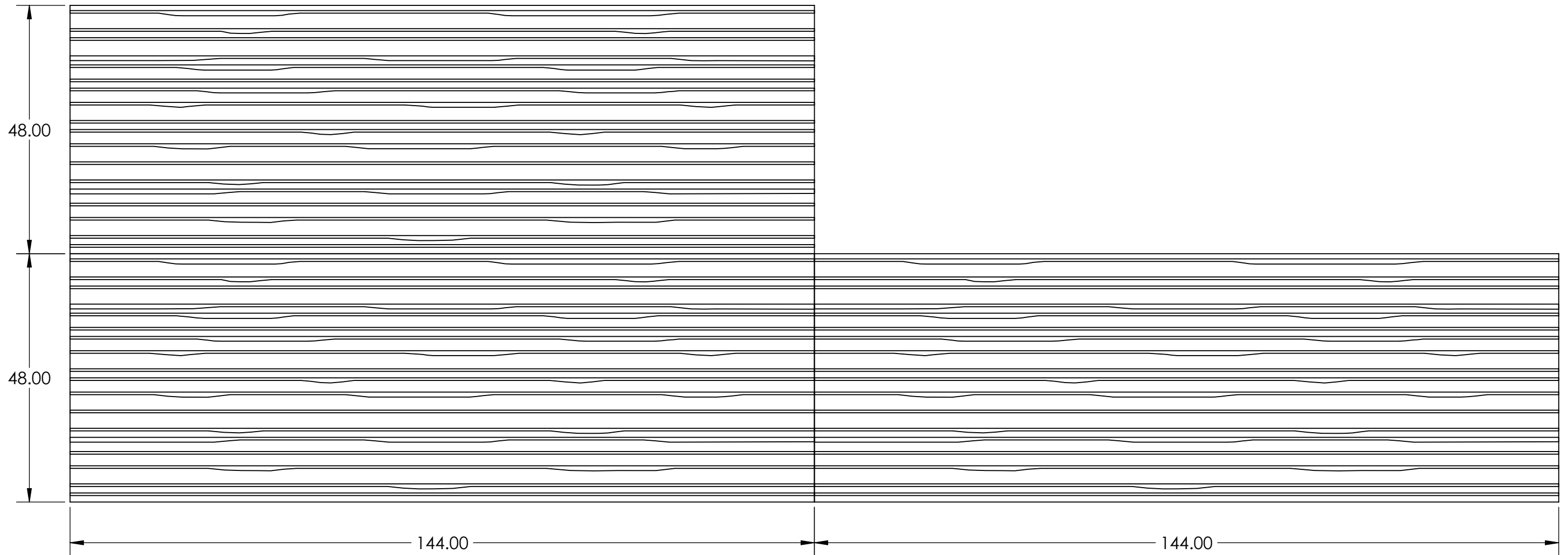


**Spec Formliners, Inc.**

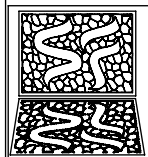
Impressive on Concrete



**Note: Panels match side to side.**



**Spec Formliners, Inc.**  
 1038 E. 4th St, Santa Ana, CA 92701  
 888-429-9550 Phone 714-429-1460 Fax  
 www.SpecFormliners.com



**Spec Formliners**  
 INCORPORATED

DRAWN BY: Chris S. 6/21/2021  
**PROPRIETARY AND CONFIDENTIAL**  
 THE INFORMATION CONTAINED IN THIS  
 DRAWING IS THE SOLE PROPERTY OF  
 SPEC FORMLINERS, INC. ANY  
 REPRODUCTION IN PART OR AS A WHOLE  
 WITHOUT THE WRITTEN PERMISSION OF  
 SPEC FORMLINERS, INC. IS PROHIBITED.

SHEET SIZE  
**11"x17"**  
 DO NOT  
 SCALE  
 SHEET 3 OF 3

**1850 MATCHPOINT LAYOUT**

NOTES:

APPROVAL SIGNATURE:

Please provide a signature in this box to indicate that this drawing has been approved and that Spec Formliners, Inc. may begin production.

REV. 6/21/2021

WORK ORDER#:

LINE ITEM#: